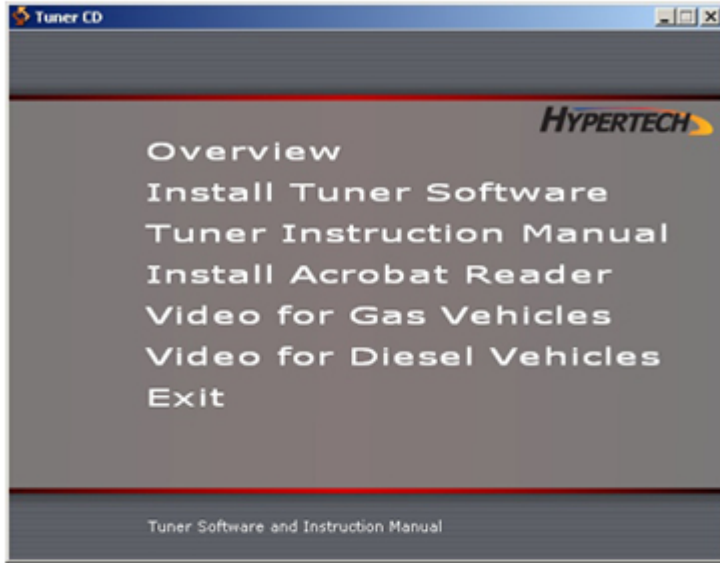


The Updating Process Is Just Four (4) Easy Steps

1. Download and Install the Tuner Software

To update your Programmer, you must first install the Tuner Update Software to your window-based computer (PC).

If you are installing the Tuner Update Software from the supplied Installation and Software CD, this is the first screen that will appear:



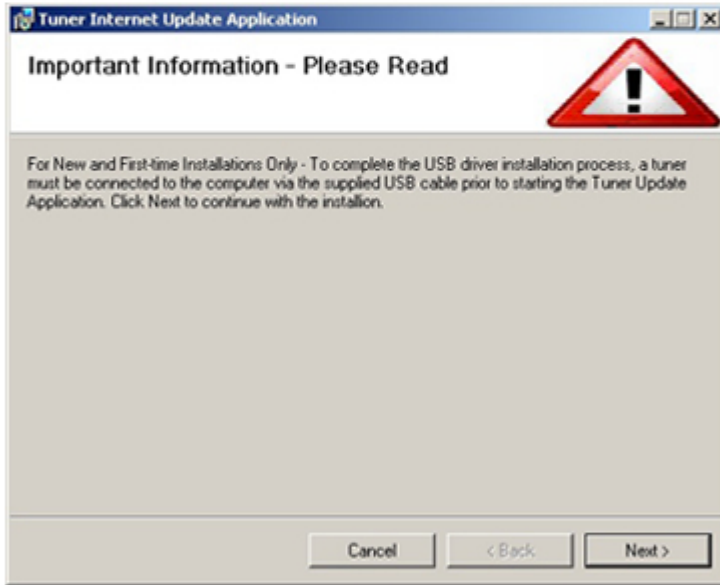
If you are downloading the Tuner Update Software by clicking the Download Update Software icon on our website, and after saving the file to your PC, this will be the first screen that will appear:



Please make sure the Programmer is NOT connected to your PC when beginning the installation process. You will be prompted during the installation process when to connect the programmer to the PC.

2. Connecting Programmer to PC

When the message below appears, connect the Programmer to the PC with the supplied USB cable and press next to continue. Continue following the installer instructions until completed. Once this is complete, the Tuner Update Application icon will appear on your desktop.



3. Launch Tuner Update Application

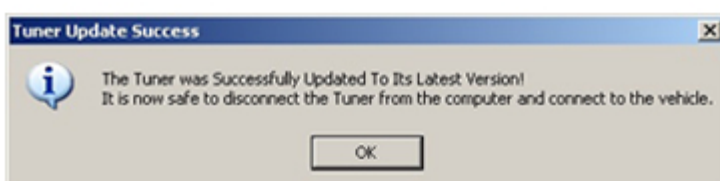
Double click the Tuner Update Application icon on the desktop and follow the steps.

Tuner Update Application Icon



4. Disconnect the Programmer

When updating is successful, disconnect the Programmer and you're ready to program your vehicle.



Important Information - Please Read

Calibration Not Currently Supported



If you are updating your Programmer because of a "CALIBRATION NOT FOUND" message, and it is not currently supported, you will be asked to enter your email address so we can email you when your calibration is supported and your update is ready for downloading. New calibration updates are typically available in one (1) to three (3) days.